

Update SynScan Bootloader

Purpose of Updating Bootloader

It was found that in some singularly condition, the glitch from power supply might cause the SynScan hand control locked into 'SynScan Update' mode. The new bootloader can prevent this accident, thus make the hand control more reliable.

Step 1 Prepare files

Create a folder named 'SynScan' on driver C and download the following files from our web site into it.

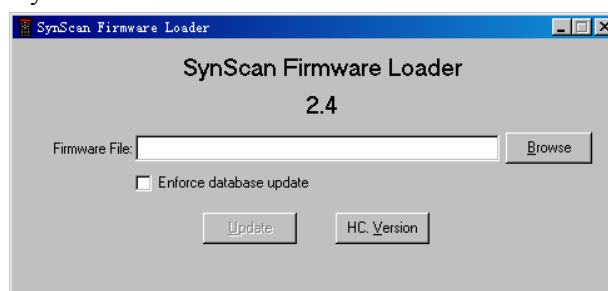
- SynScan Firmware Loader.exe
- SynScanBootloaderVer1.3.ssf
- The latest SynScan firmware (For example, SynScanV0301EQ.ssf)

Step 2 Connect hardware

- Connect SynScan V3 hand control to PC's RS-232 port with the PC-link cable that comes with the hand control.
- Press and hold down '0' and '8' keys simultaneously on the hand control, then plug in the power cord to turn on the hand control.
- Now the hand control should show 'SynScan Update Ver. 1.0' on its LCD screen. If it shows 'SynScan Update Ver. 1.3', you don't need to update the bootloader.

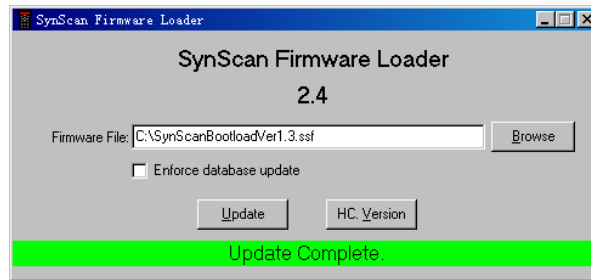
Step 3 Download Bootloader Updating Utility

- Double click 'C:\SynScan\SynScanFirmwareLoader.exe' to run it. The following window should appear on your PC's screen.



Note: You must use 'SynScan Firmware Loader' version 2.4 and later.

- Click 'Browse' key to select 'C:\SynScan\SynScanBootloaderVer1.3.ssf'.
- Click 'Update' key to download the bootloader updating utility into SynScan hand control. When downloading finishes, PC should show the following.



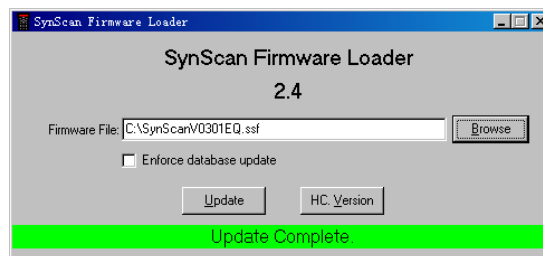
- Unplug the power cord to turn off the hand control.

Step 4 Update Bootloader

- Plug in the power cord to turn on the hand control. DO NOT press and hold down any key on hand control at this moment.
- The hand control should show 'Press <ENTER> to renew Bootloader' on the LCD screen.
- Press the <ENTER> key once. Now the hand control will show 'Please wait ...' for about 5 seconds, then it will show 'Finished'. This means that the Bootloader has been updated from version 1.0 to version 1.3 successfully.
- Unplug the power cord to turn off the hand control.

Step 5 Re-load the latest SynScan firmware

- Press and hold down '0' and '8' keys simultaneously, and then plug the power cord to turn on the hand control.
- Now the hand control should show 'SynScan Update Ver. 1.3' on its LCD screen.
- On the PC's 'SynScan Firmware Loader' window, Click 'Browse' key to select the latest SynScan firmware file (For example, SynScanV0301EQ.ssf). The PC will show:



- Click 'Update' button to download SynScan firmware to hand control. When the PC shows 'Update Complete' again, the hand control is ready for use.